



ANLY TIMER

TDF / ATDE DEFROST TIMER



CHARACTERISTIC :

- Specialized for refrigeration equipment
- Automatic control of Cooling - Defrost cycle
- Adjustable delayed-fan-start time*
- Manual "Defrost" button in front*

SPECIFICATION :

Operating voltage	AC(V): 110, 220, 240
Allowable operating voltage range	85~110% of rated operating voltage
Rated frequency	50 / 60 Hz
Contact rating	250VAC 5A (resistive load)
Reset time	MAX 0.2S
Power consumption	Approx. 2VA(AC 220V)
Life	Mechanical: 5,000,000 times Electrical: 100,000 times
Ambient temperature	-10 ~ +50°C
Ambient humidity	MAX 85%RH
Weight	TDF Approx. 225g ATDE Approx. 210g

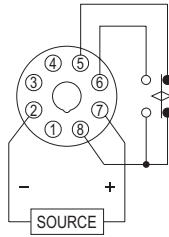
Note: "*" indicates applicable to ATDE only

TYPE SELECTION :

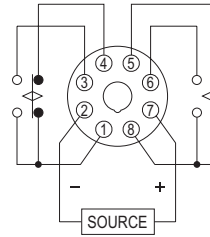
Type	TDF	ATDE
Time setting of cooling and defrost	○	○
Time delay setting of fan	---	○
Manual defrost button	---	○
Time range	12H x 30M or 12H x 60M	12H x 30M or 12H x 60M

CONNECTION :

TDF



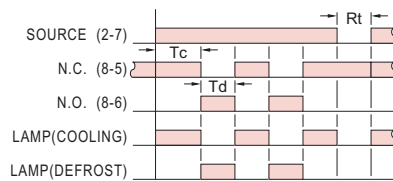
ATDE



TIMING CHART :

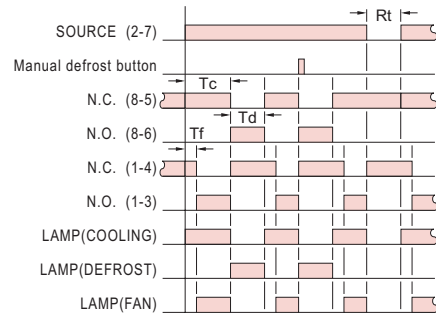
TDF

Rt:RESET Tc:COOLING Td:DEFROST



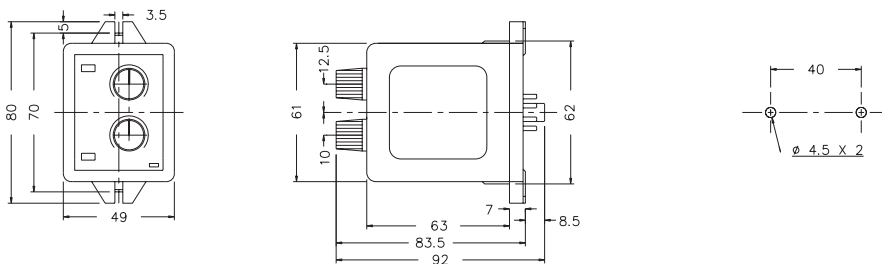
ATDE

Rt:RESET Tc:COOLING Td:DEFROST
Tf:TIME DELAY OF FAN

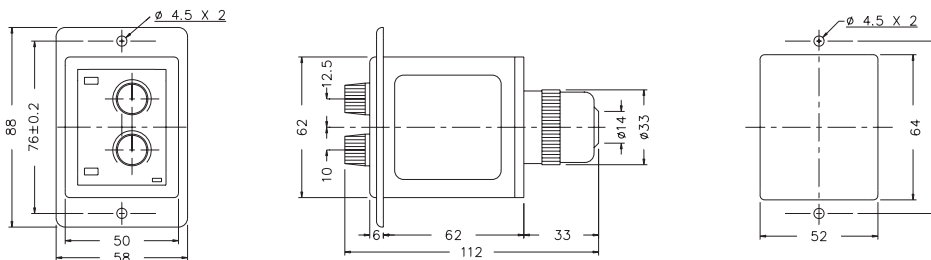


DIMENSIONS : (mm)

N type(Surface Mounting): Using 8PFA Socket



Y type(Flush Mounting): Using US-08 Socket or P3G-08 Socket



ANLY ELECTRONICS CO., LTD.

<http://www.anly.com.tw>

TAIWAN MAIN OFFICE : ANLY ELECTRONICS CO., LTD.

No.19, Lane 202, Fushou St., Shinjuang City, Taipei, Taiwan 242
TEL: +886-2-2996-3202 FAX: +886-2-2996-2017

MALAYSIA BRANCH : JUSTY ELECTRONICS (M) SDN, BHD.

No.1, Jalan 6/89B, Kawasan Perindustrian Trisegi, Batu 3 1/2 Off Jalan Sungei Besi, 57100 Kuala Lumpur, Malaysia
TEL: +60-3-7983-5758 FAX: +60-3-7981-5052

HONG KONG BRANCH : ANLY ELECTRONICS (HK) LTD.

Flat K, 13/F, Edward Mansion, 141 Prince Edward Road W., Kowloon, Hong Kong
TEL: +852-2397-2505 FAX: +852-2397-6080

SHANGHAI BRANCH : ANLY TECHNOLOGY (WUXI) CO., LTD.

Room 13G, No.831, Xinzha Rd., Jingan District, Shanghai, China 200041
TEL: +86-21-6218-3300 FAX: +86-21-6217-5911

NO. TDF-G-A